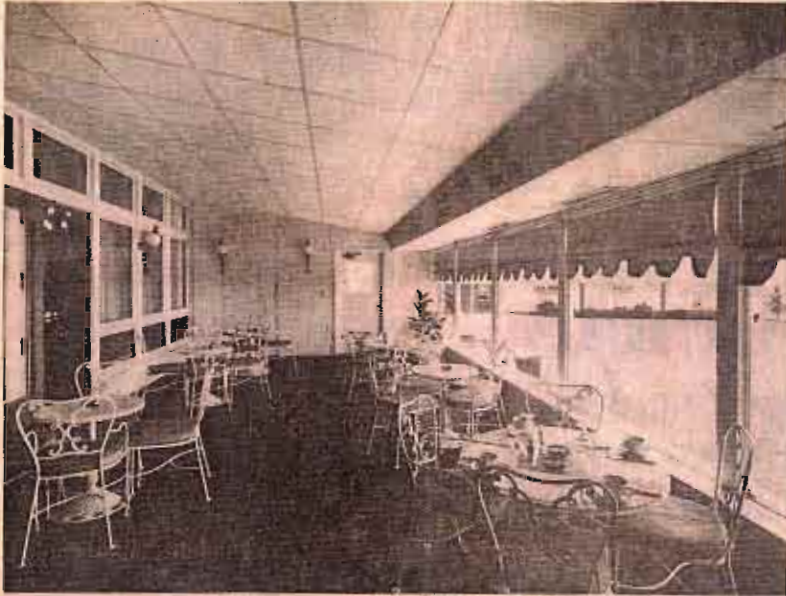


Lochland Club Adds to Its Facilities



Lochland Country Club has expanded its clubhouse facilities to include an area that can be used by golfers or for social events. The new area is known as "Emerald Loch." A portion of the porch on the south side of the club looking toward the golf course was glassed in, carpeted, paneled and new furniture added. Bright green carpeting, white furniture and green walls with a white glaze make the room a beautiful addition. Harold Shattuck, club manager, said the new addition can accommodate 46 persons. (Tribune Photo by Pat Patterson)

